

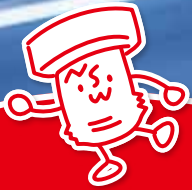
NSW

NIPPON STUD WELDING CO., LTD.



Supporting society with evolving technology

They are instilled with all technology and know-how we have. _____



Make invisible technology visualized.



NSW is committed to supporting society by making full use of evolving technologies.

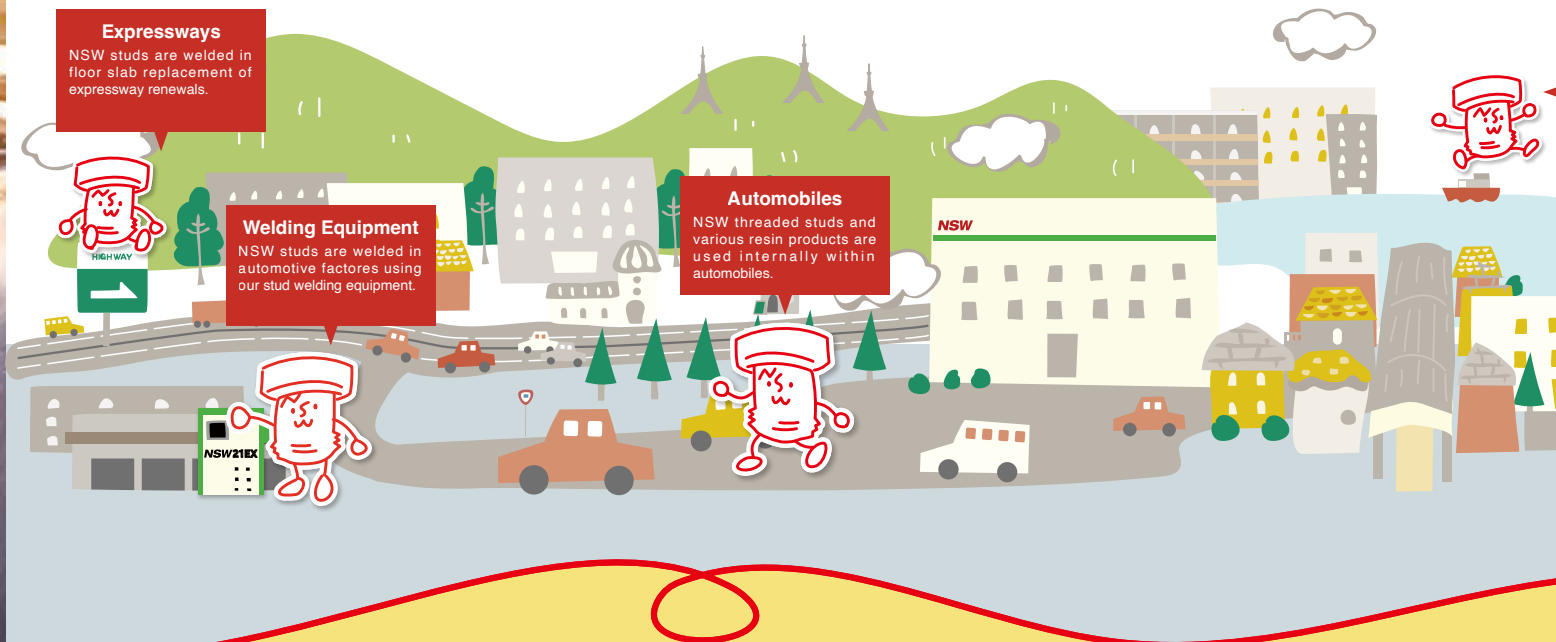
We focus on application development and proposals for our total fastening system, and leveraging the linchpin of stud welding technology, we engage in a diverse range of activities across the automotive, shipbuilding, construction, civil and plant engineering, and other general industries.

In our tireless pursuit to be a “Customer Satisfaction Company,” we strive to provide services that meet customer needs, bringing to bear our enthusiasm and expertise to support your business—together, we will shape the future.



Stud welding, surprisingly close to you

NSW focuses on development and proposals of applications for its total fastening system, underpinned by stud welding technology. We play a wide-ranging role in the automotive, shipbuilding, construction, civil and plant engineering, and other general industries. Our wish is to be a company that consistently realizes customer satisfaction.



Automotive Components



Our products with mating functions, such as plastic clamps and clips, are items of particular value at assembly sites as they require only a light touch for easy assembly and satisfy a range of requirements, such as high pull-out force, sound insulation, and a sense of moderation.

We offer designs in a wide variety of shapes and strengths in line with the primary purpose of the product, such as creative interior components and plastic or aluminum protectors. Taking a comprehensive approach, from material selection to shape, our proposals reflect the needs of the customer.

Automotive Welding Equipment



Our stud welding Equipment are less susceptible to plating and oil on base materials, can perform stable welding on thin steel plates, and enable a wide variety of stud bolts to be welded from one-sided access. Operated manually or automatically, they are constantly evolving, with each successor model inheriting world-first technology. Professional staff promptly handle various requests for maintenance and support, and proposal-based sales are tailored to meet customer needs.

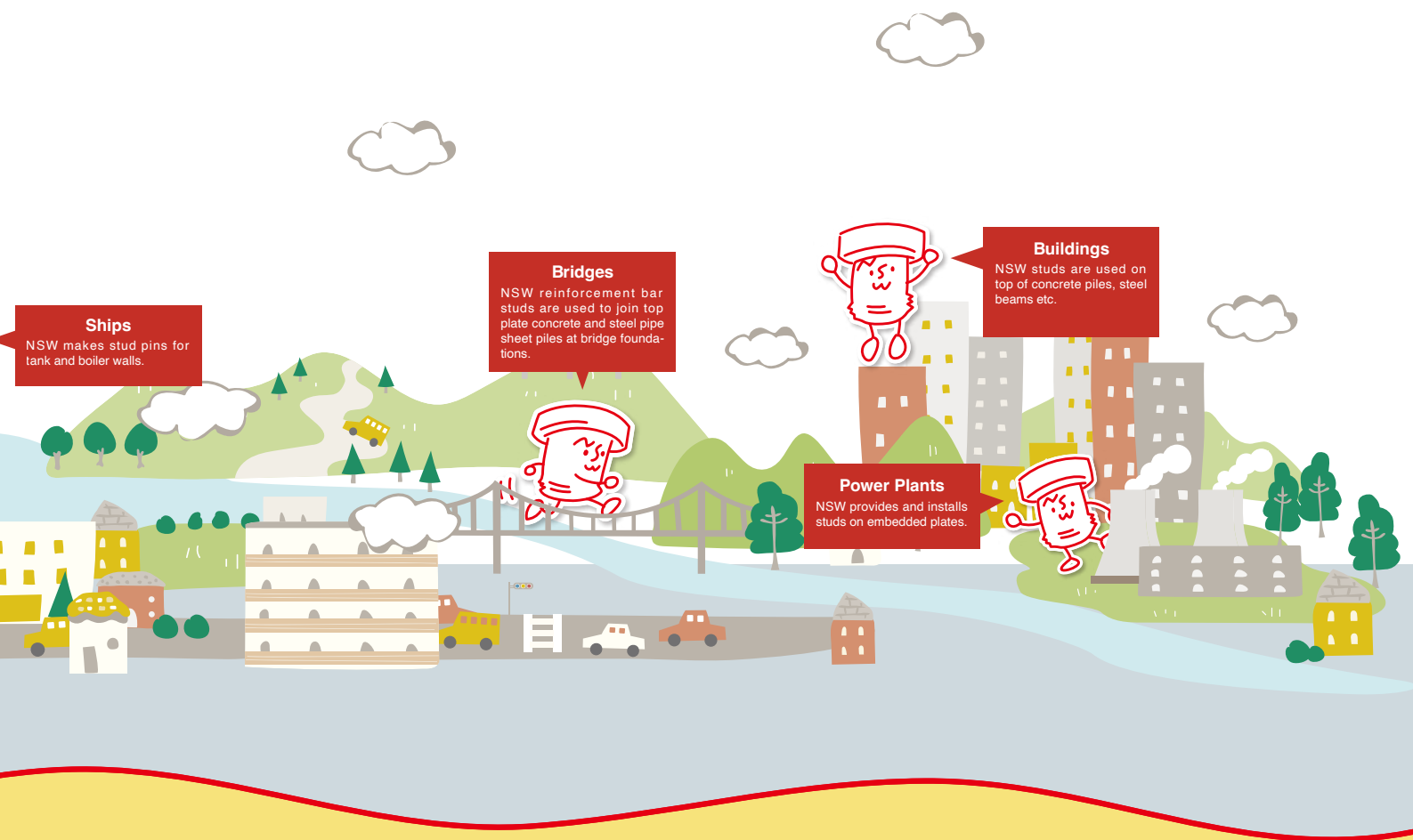
Construction & Plants



Stud welding is widely employed in an array of fields, including construction, civil engineering, bridges, shipbuilding, nuclear power plants, and various kind of plants, owing to its split-second welding characteristics and high joint strength.

Whether it be shear connectors, reinforcement bar studs (KSW490), threaded studs, or our in-house developed high-strength studs, we have at the ready a variety of stud shapes for assorted applications in respective fields, and by leveraging newly developed technology and our broad expertise, we provide proposals in line with customer needs.





Ships
NSW makes stud pins for tank and boiler walls.

Bridges
NSW reinforcement bar studs are used to join top plate concrete and steel pipe sheet piles at bridge foundations.

Buildings
NSW studs are used on top of concrete piles, steel beams etc.

Power Plants
NSW provides and installs studs on embedded plates.

With Our Customers

In respond to our customers' needs, we make total proposal from design to development, manufacturing, sales and construction work making sure how products are used.

Covering wide range of manufacturing and delivering methods from "wide variety but small lot" to "large-scale mass production", we deliver "new hope" which solves customer's anxieties and problems.

STEP 1 Problem hearing

First step to propose best 'solution-neverlasting in the future by hearing customers' desires and problems.

STEP 2 Idea

We solve customers' anxieties and problems. We deliver "New Hope".

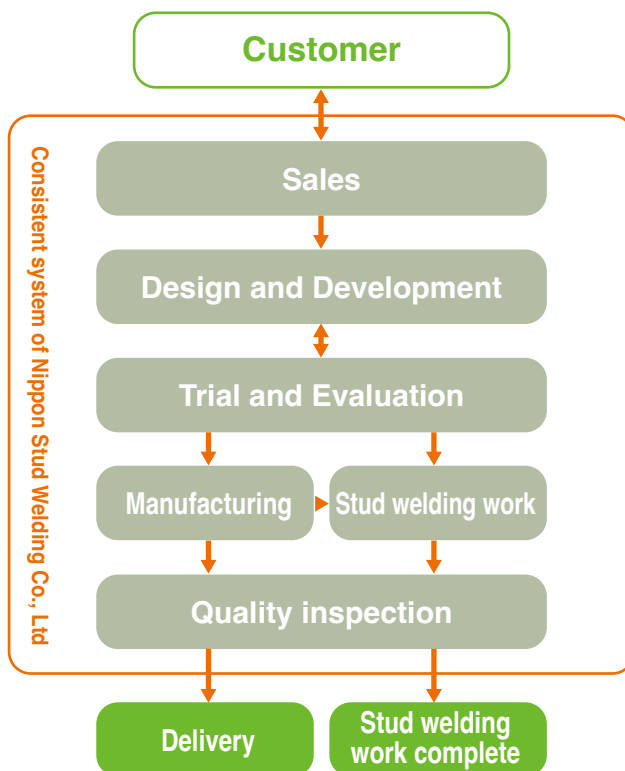
We are proud of our proposals in which we consider mass production and cost reduction.

STEP 3 Design / Trial / Evaluation

It's time to change from examination or possibility to confirmation We show the outcome of our proposal.

STEP 4 Production / Inspection / Shipping

"We never lose focus. We cannot lose focus" Under strict NSW management system, we offer production method in accordance with your delivery and quantity.



Our Missions

Engineering Department

We are continuously developing new products and technologies which meet our customers' demand.

We provide perfect satisfaction to our customers on quality, price and delivery. In order to respond to customer needs at all times, we develop new methods by getting outside support and cooperation.



Production Department

We supply high-quality, safe and reliable products.

Based on strict work instructions, we perform assembly work correctly and certainly. We are committed to keeping the delivery date and are flexible to sudden schedule changes.



Quality Control

We provide our customers with peace of mind and reliability through thorough production process control and inspection systems.

We have established a quality control system along with our cooperative companies, as well as traceability of various production information of our products.



NIPPON STUD WELDING CO., LTD.

Headquarters

West Tower 26F, Shinkawasaki Twin Tower,
1-2, Kashimada1-chome, Saiwai-ku, Kawasaki, Kanagawa 212-0058, Japan
TEL +81-44-589-4410
FAX +81-44-589-4412

Tokyo branch office

West Tower 26F, Shinkawasaki Twin Tower,
1-2, Kashimada 1-chome, Saiwai-ku, Kawasaki, Kanagawa 212-0058, Japan
TEL +81-44-589-9515
FAX +81-44-589-9520

Chubu branch office

13-1, Yanagihara, Kitayamazaki-cho, Anjyo-shi, Aichi 446-0011, Japan
TEL +81-566-45-5241
FAX +81-566-45-6135

Osaka branch office

13-4, Esaka-cho 5-chome, Suita, Osaka 564-0063, Japan
TEL +81-6-6385-2332
FAX +81-6-6385-2375

Yokohama branch office

21-10, Komaoka 4-chome, Tsurumi-ku, Yokohama, Kanagawa 230-0071, Japan
TEL +81-44-589-9515
FAX +81-44-589-9520

Chugoku branch office

12-10, Yokogawa-cho 3-chome, Nishi-ku, Hiroshima 733-0011, Japan
TEL +81-82-532-1785
FAX +81-82-232-3288

Shiga Technical Center

474, Gokasho-obata-cho, Higashiomi, Shiga 529-1422, Japan
TEL +81-748-48-4600
FAX +81-748-48-5070

NSW (THAILAND) CO., LTD.

Amata City Chonburi Industrial Estate
700/906 Moo 3 T. Nongkhaka
A. Panthong, Chonburi 20160, Thailand
TEL +66-38-212360-64
FAX +66-38-212357